

Christopher Fulkerson

Two Biblical Proclamations

In Hebrew

Versions for unaccompanied voices and for chorus

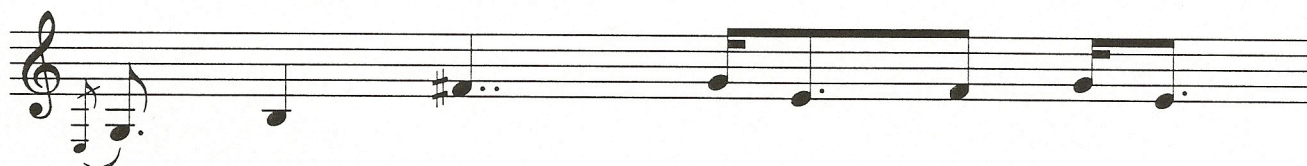
1989

ChristopherFulkerson.com

Shimeai, Yishiriala

Christopher Fulkerson

Forte, robusto, vigoroso ed energico ♩ = 88

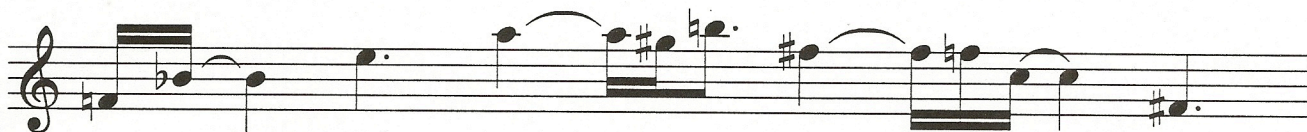


Shi - me - ai

שִׁמְעֵי

Yi - shi - ri - a - la

יְשִׁירֵאלָא



Yi - ha - va - ha - a - la - ha - yi - nu - va

יְהוָה לֵאלֹהֵינוּ



Yi - ha - va - ha - a - chi - da.

יְהוָה אֲחִידָ:

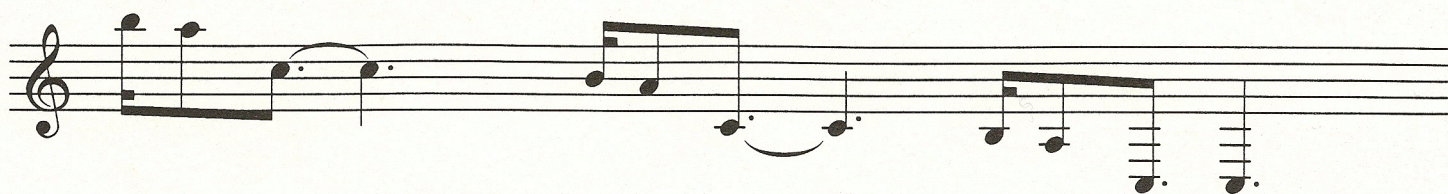
Hebrew calligraphy by the composer.

63"
3/5/1995
San Francisco

Aritsa, Aritsa, Aritsa

Christopher Fulkerson

Forte, robusto, vigoroso ed energico ♩ = ca. 88



A - ri - tsa, —

אֵרִיצָא

A - ri - tsa, —

אֵרִיצָא

A - ri - tsa, —

אֵרִיצָא



Shi - me - ai - yi da - bi - ri Yi - ha - - va - ha. —

שִׁמְעָא יְדֵבִירֵי

יְהוָה

וְהוֹדוּ

Earth, Earth, Earth, hear the word of the Lord! Jeremiah 22:29

Hebrew calligraphy by the composer.

26"
6/30/1996
Saint Francis

Shimeai, Yishireala

Listen, Israel

Setting for Four Part Chorus or Brass

forte, robusto, vigoroso ed energico
Maestoso ♩ = 88 *f*

Christopher Fulkerson

1 2 3

Handwritten musical notation for measures 1-3. The top staff is in treble clef with a 7/16 time signature. The bottom staff is in bass clef with a 7/16 time signature. The lyrics are "Shi - me - ai". A handwritten *f* is placed above the first measure. Measure numbers 1, 2, and 3 are boxed above the staves.

4 5 6 7

Handwritten musical notation for measures 4-7. The top staff is in treble clef with a 5/8 time signature. The bottom staff is in bass clef with a 5/8 time signature. The lyrics are "Yi-shi - Ri - a - la Yi - ha - va - ha a -". Measure numbers 4, 5, 6, and 7 are boxed above the staves.

8 9 10 11

Handwritten musical notation for measures 8-11. The top staff is in treble clef with a 9/16 time signature. The bottom staff is in bass clef with a 9/16 time signature. The lyrics are "- la - ha - yi - NU - va Yi - ha -". Measure numbers 8, 9, 10, and 11 are boxed above the staves.

12 13 14

Handwritten musical notation for measures 12-14. The top staff is in treble clef with a 3/4 time signature. The bottom staff is in bass clef with a 3/4 time signature. The lyrics are "- va - ha a - chi - da". Measure numbers 12, 13, and 14 are boxed above the staves.

Neutral 1-88 Aritsa forte, robusto, vigoroso ed energico Christopher Fulkeron

Handwritten musical score for the first system. It consists of two staves (treble and bass clef) with piano accompaniment. The music is in 4/4 time. The first measure is marked with a forte **f** dynamic and an accent (>). The second measure is marked with **f** and the instruction "col alto possibile". The third measure is marked with **f** and the instruction "col tenor possibile". The word "Aritsa" is written above the notes in each measure.

Handwritten musical score for the second system. It features a vocal line on a single staff and piano accompaniment on two staves. The tempo is marked **p** (piano) and the dynamics include **p**, **crescendo**, **al**, and **f**. The lyrics are: "chi-me - ai - yi da - bi - vi Yi - ha -". The piano accompaniment includes various chords and rhythmic patterns.

Handwritten musical score for the third system. It shows the end of a phrase with the lyrics "va - ha." followed by a double bar line. To the right of the staves, the date "6/26/2004" is written in large, handwritten characters.

© Copyright 2004 by Christopher Fulkeron
All rights reserved.